

NEWSLETTER



THE DOBIE TIMES

ISSUE NO. 10 | OCTOBER 2024



Inside This Issue

Page 1 – Hello

Page 2 & 3 – The Duchess Agnes

Page 4 & 5 – Connecting to Lincs Dobermann Rescue

Page 6 – Dog Sport - PSA

Page 7 – Contact Information

Cover image: Agnes

HELLO 🙋

Autumn is here and the warm weather is fading but all the colours are coming out to shine. After a brief pause in September, The Dobie Times is back with another exciting edition. This edition features The Duchess Agnes who has landed on her paws with Ellen and Ron.

If you managed to attend Dobiefest, Yorkshire Canine Academy put on quite the show of this month's dog sport; PSA. If you were not able to be in attendance, never fear there is a video available with the link included in the article. Ever wondered how to connect with LDR, look no further. There are so many ways to connect to the Rescue, to support the Rescue, and above all else connect with some wonderful, like-minded people who are passionate about everything Dobermann.

September has been an extraordinarily busy month for Lincs Dobermann Rescue. The volunteers have been busy at work rehoming an amazing 9 Dobies throughout September. 🤔 🐾

The Duchess Agnes

By Ellen Hearn

My husband Ron has always wanted a Dobermann. We have had dogs but mainly German Shepherds, all of whom we loved. As my husband had retired and I was having a break from work, we felt the time was right. I did research to ensure a Dobermann would be right for us and when I completed the application form, I realised we were hoping for quite some dog.



I have family on the Isle of Wight and we travel there often. We would want our new dog to come with us. In fact, we realised that we would want our dog to come with us quite a lot; not just on long walks and visits to friends but on days out and holidays. So, we needed a dog who was a decent traveller and could adjust to new surroundings on a regular basis.

We were prepared to take on some issues as we believed it was unlikely we would get a rescue dog that didn't have some issues. However, we were adamant that we would only get a rescue dog.

How very lucky we were when we got the call from the wonderful volunteer at Lincs Dobermann Rescue (LDR) telling us about Agnes. She was everything we wanted and more. And yes, she had a couple of issues. She was overweight and pulled on the lead. Well, weighing her food and gradually increasing her exercise were not going to be a problem for us. And lead walking is a breeze now that we have trained her and she is exercised regularly.

Three years ago on 26 September 2021, we met a lovely volunteer for LDR at the kennels and there was Agnes, all 47kg of her, on her best behaviour and playing with Cora. It was love at first sight! I'm happy to say that she's around 40kg now. She is big for a girl but she's pretty muscular due to regular exercise.

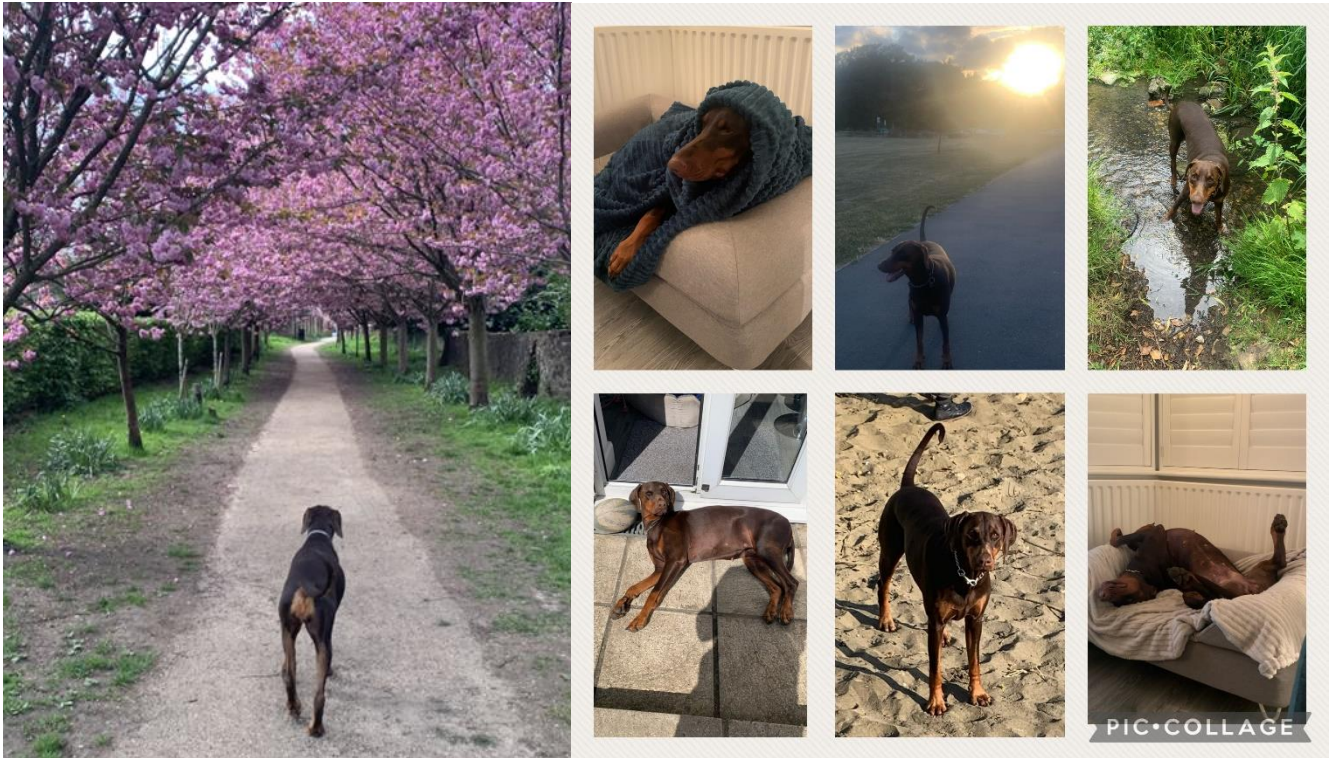
We drove her home and she proved that she was a fabulous traveller and the rest is history. She has come with us on numerous breaks to various places with several more planned. My friends say they'd like to be our dog as Agnes has such nice holidays!

For us, the issues we have faced have been with her health. She is not a poorly dog per se, but she was diagnosed with pancreatitis. We manage this with a low-fat diet and she's only had a couple of episodes since diagnosis. We see this when she goes quiet and really stretches out her body. She also had to have a cruciate operation on her left leg but we had a wonderful veterinary surgeon; we did everything by the book and she recovered brilliantly. Last summer in Cornwall, she had a couple of very small leaks and when we checked in with the vet, he advised that she have 1mg of Incumin daily to support her bladder. He believes she may have been spayed at too young an age. So, for us, we have to ensure we have decent pet insurance. Otherwise, Agnes is a dream of a dog.

She is great with people and other dogs which is very important as we live in Bromley, Kent where there are a lot of dogs and dog parks! She loves going out with us and her recall is fabulous. She likes her sleep and rarely disturbs us through the night. Her only naughty side is that she can scavenge food sometimes – she loves her food. She also loves a ball and we call her the ball sniffer as no matter where we go, if someone has lost a ball, Agnes will find it! One thing we discovered. She used to suck on her blankets which I believe is a comfort thing. We now have proper rubber dog balls in her toy box and she sucks on those instead.

We must give credit to her previous owner. She has been really well trained and you can tell, really well loved. And because of that, we are blessed to have her.

My sister says we should have called her Duchess as she can be a bit snooty at times and loves to lay with her paws crossed. But she will always be our Agnes.



Connecting to Lincs Dobermann Rescue



There are always exciting things happening at Lincs Dobermann Rescue (LDR). So many Dobies looking for their forever homes. Where can you find the Dobies needing a home? Want more information about LDR?

Well, if you are reading The Dobie Times, you have either navigated to the LDR website or are a member on one of a few different Facebook pages.

Let's start with Facebook, there are 4 different Facebook pages (Please remember to be respectful when interacting on any of the Facebook pages for LDR):

The main page that is in the spirit of how LDR came to be, a place where like-minded Dobie owners can connect, ask advise, share stories, and share photos of their beautiful, crazy, goofy Dobermanns.

<https://www.facebook.com/groups/527459614111199>

Then if you are looking to adopt or want to see what Dobies are available for adoption, there is Dobies @ Lincs Dobermann Rescue. Be sure to join if you are thinking about adopting or want to see the Dobies available with some of the information about them.

<https://www.facebook.com/groups/720348868349681>

There is the fundraising page where there are raffles and draws all the time, as well as some fun seasonal photo competitions, along with much much more. It will give you a chance to give to a very worthy cause.

<https://www.facebook.com/groups/378819317147099>

Last but not least is the Dobie Mates Facebook page. This is a Facebook page for just Dobie Mates. Who is a Dobie Mate and how do you become one? Dobie Mates are people who donate monthly (no amount is too big or too small). It is really simple to sign up.

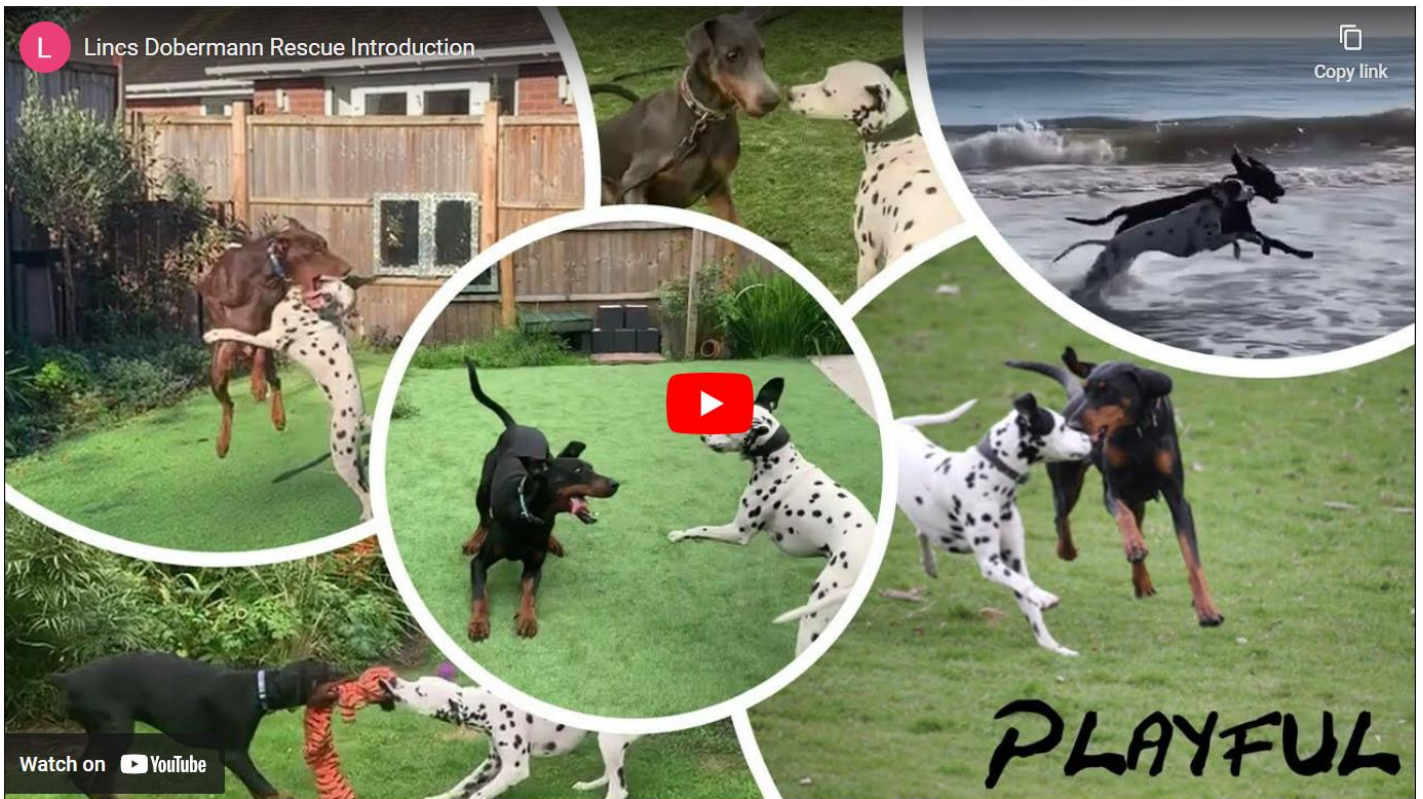
To become a 'Dobie Mate' all you need to do is set up a standing order at your bank marked Dobie Mates, payable to Lincs Dobermann Rescue, Sort Code: 30 98 90 Account No: 15963168

Please confirm the start date to us by emailing: dobies@lincsdobermannrescue.com and you will receive a link to join the Dobie Mates Group.

Don't forget about the website where there is so much information available as well as a shop where you can buy LDR merchandise for humans and Dobies ❤️

<https://lincsdobermannrescue.com/>

If you want to know more then just click on the link below to see the introduction to Lincs Dobermann Rescue.



<https://youtu.be/enS0KCs6VS4>

PSA

Did you attend Dobiefest? If you did, then you would have been treated to quite the display of PSA by Yorkshire Canine Academy and Stark, assisted by Brad Black. See below for a link to the video of the demonstration. What is PSA? It is Protection Sports Association. It was founded in the United States in 2001 by Jerry Bradshaw and Joe Morris. It came to the England in 2022 with the first trials being held in July 2022, and has become one of the fastest growing dog sports in England. PSA has the dog and handler working through obedience and protection routines allowing a competitive outlet through a scenario-based program.



The first thing required to compete is a mandatory entry level certificate called a Protection Dog Certificate (PDC). This certificate must be achieved by all competitors before they are able to progress to the competitive levels of PSA 1 through PSA 3. To achieve the title for each level it must be passed twice, once for obedience and once for protection. The obedience portion of the level must be passed first before moving on to the protection portion with a minimum score to pass of 75%. If that wasn't enough, PSA is even more challenging given the surprise nature of the sport with it being scenario based rather than a rigid routine, especially in the upper levels. This type of testing makes for an exciting show as well as providing a true test of the relationship between the dog and handler and the quality of the training.

So it sounds easy, right. There are only three levels to complete, even having to pass each level twice that is only 6 passes at 75%. You would be forgiven in thinking that if your dog was trained amazingly and you had the best relationship that you could achieve PSA 3. You would be wrong. PSA at each level is very challenging and only 32 dogs worldwide have achieved PSA 3. You read that right, 32 dogs worldwide. PSA will definitely challenge you, if you think you and your dog are up for. Please see the links below for more information.

Dobiefest demonstration video:

https://www.instagram.com/reel/C-a_6xzMVuy/

PSA websites:

<https://psak9-as.org/>

<https://www.crownpsa.co.uk/>



The 3-3-3 Rule of Adopting a Rescue Dog (This is a general guideline; all dogs are unique and will adjust to their new environments in their own time.)

Sunday	Monday	Tuesday
1	2	3

In the first 3 days, your new dog may feel overwhelmed, be scared and unsure of what is going on, not comfortable with themselves or their surroundings, they may not want to eat or drink, shut down and want to curl up in their crate or hide, and finally may test the boundaries.

Sunday	Monday	Tuesday	Wednesday	Thursday	Friday	Saturday
4	5	6	7	8	9	10
11	12	13	14	15	16	17
18	19	20	21	22	23	24

After 3 weeks, your new dog may start to show signs of settling, feel more comfortable in the environment and with the people of the house, understand the routine, start showing their true personality. At this point any behavioural issues may start to show up.

Sunday	Monday	Tuesday	Wednesday	Thursday	Friday	Saturday
25	26	27	28	29	30	31

After 3 months, your new dog should feel settled in their new home, have built a bond with the people of the house and be showing signs of trust in the surroundings and people, feeling secure with the home and family, and be settled into a routine.

Ways to Help:

1. Go to the website and click the Donate Now button.
2. Join the Lincs Dobermann Rescue Fundraising Group on Facebook.
3. Become a Dobie Mate by making a monthly donation.
4. Gift in your will.
5. Volunteer to Foster Dobies that come to Lincs Dobermann Rescue.
6. Volunteer in other ways. There are plenty of opportunities to help.

Remember no amount is too small. Every little bit helps all the beautiful Dobies that come through Lincs Dobermann Rescue.



Lincs Dobermann Rescue Website

<https://lincsdobermannrescue.com/>



Main Facebook Page

<https://www.facebook.com/lincsdobermannrescue>



Dobies @ Lincs Dobermann Rescue (Adoption page)

<https://www.facebook.com/groups/720348868349681>



Lincs Dobermann Rescue Fundraising Group

<https://www.facebook.com/groups/378819317147099>



X (Formerly Twitter)

<https://twitter.com/LincsDobermann>



Instagram

https://www.instagram.com/lincs_dobermann_rescue

ADOPTION TIPS

1. Do your research on the breed you want to adopt. Dobermanns are a large breed that require exercise and lots of attention. They also take up lots of space.
2. Get your application in early. By the time you see a post on a Dobie that is ready for adoption, it is likely a match has been found from the existing waitlist.
3. Be patient. The right Dobie is out there for you but it may take some time for them to find you.